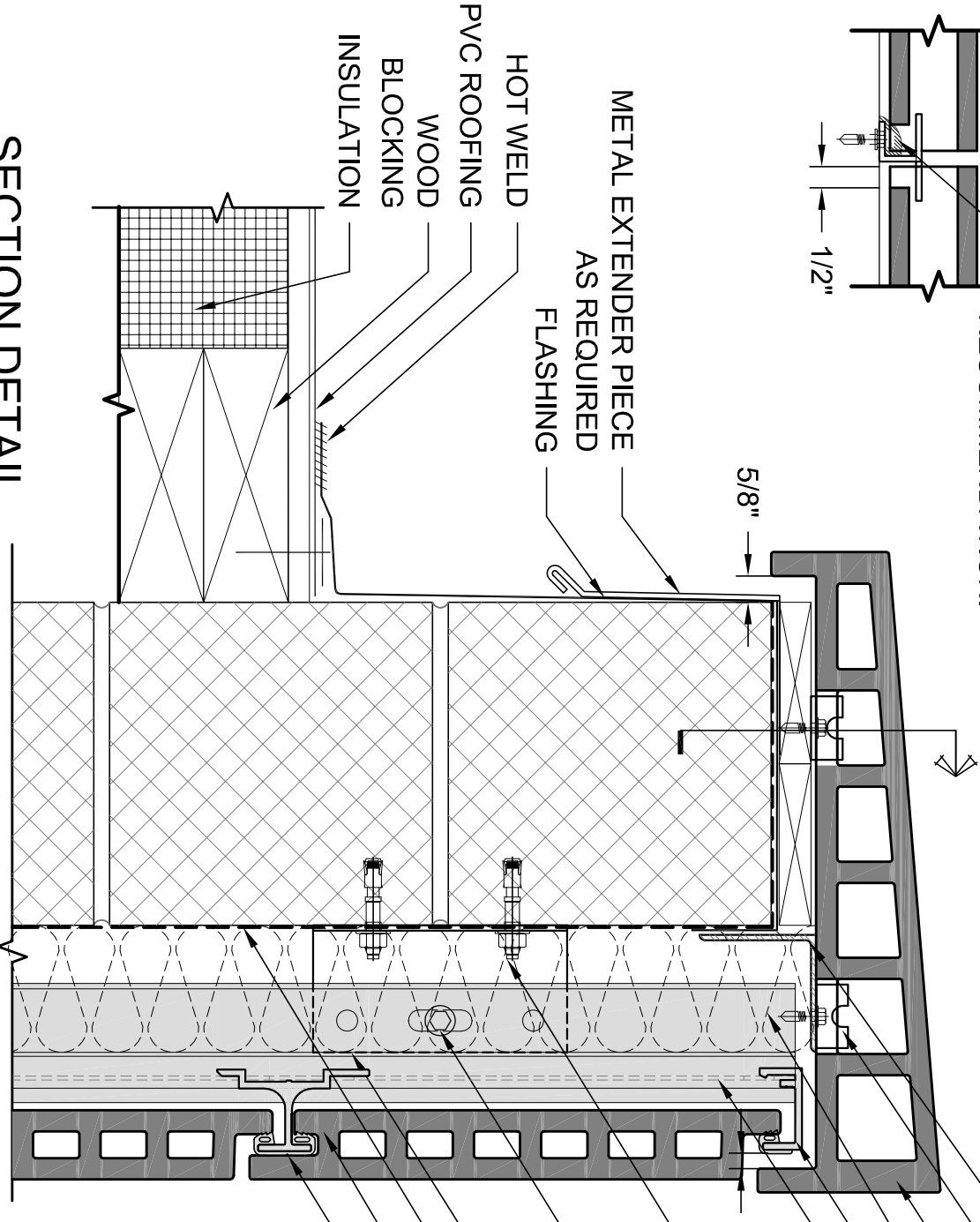


SEAL AS PER ROOFING MFG. RECOMMENDATION.



**SECTION DETAIL
CMU - AT PARAPET**

Scale: 0'-3" = 1'-0"

SINGLE PLY

ALL RIGHTS RESERVED. NO PART OF THIS WORK MAY BE REPRODUCED OR COPIED IN ANY FORM OR BY ANY MEANS -GRAPHIC, ELECTRONIC, OR MECHANICAL, INCLUDING PHOTOCOPYING, RECORDING, TAPING OR INFORMATION AND RETRIEVAL SYSTEMS-WITHOUT WRITTEN PERMISSION OF BOSTON VALLEY TERRA COTTA.

- RELIEVING ANGLE
- PARAPET CLIP *
- TERRACLAD™ COPING
- INSULATION
- TOP CLIP w/ ISOLATOR
- VERTICAL TRACK (FASTENED PER ENGINEERS RECOMMENDATION)
- FASTENER AS SPECIFIED BY ENGINEER (BY TERRACLAD™ INSTALLER)
- FASTENER AS SPECIFIED BY ENGINEER (BY TERRACLAD™ INSTALLER)
- ALUMINUM CLIP ANGLE
- AIR/ MOISTURE BARRIER
- TERRACLAD™ PANEL
- STANDARD CLIP w/ ISOLATOR

NOTES:

- * COORDINATE TERRA COTTA COPING WITH APPROVED DETAILS AND ROOFING MANUFACTURER
- SEE SECTION VIEW FOR COPING JOINT DETAIL
- BVTC TO SUPPLY TERRACLAD™ PANELS, VERTICAL TRACK w/ GASKET AND CLIPS w/ ISOLATORS. ALL OTHER COMPONENTS TO BE PROVIDED BY OTHERS.

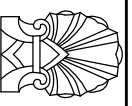
TerraClad™ Rainscreen

DRAWN: CEB DATE: 06/01/09 SCALE: 3" = 1'-0"

Boston Valley Terra Cotta

6860 SOUTH ABBOTT RD. ORCHARD PARK, NY 14127
PHONE (716) 649-7490 FAX (716) 649-7688 www.terraclad.com

**DETAIL
DRAWING**



CMU - 6