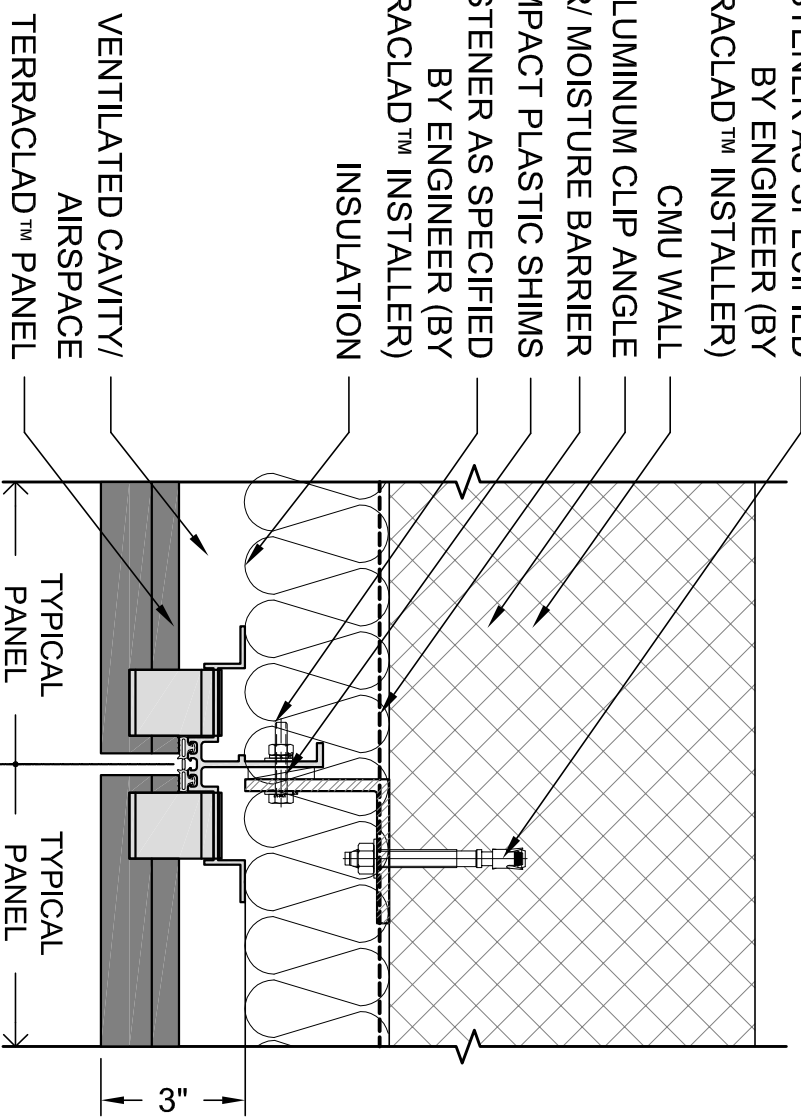


FASTENER AS SPECIFIED
 BY ENGINEER (BY
 TERRACLAD™ INSTALLER)
 CMU WALL
 ALUMINUM CLIP ANGLE
 AIR/MOISTURE BARRIER
 HIGH IMPACT PLASTIC SHIMS
 FASTENER AS SPECIFIED
 BY ENGINEER (BY
 TERRACLAD™ INSTALLER)
 INSULATION

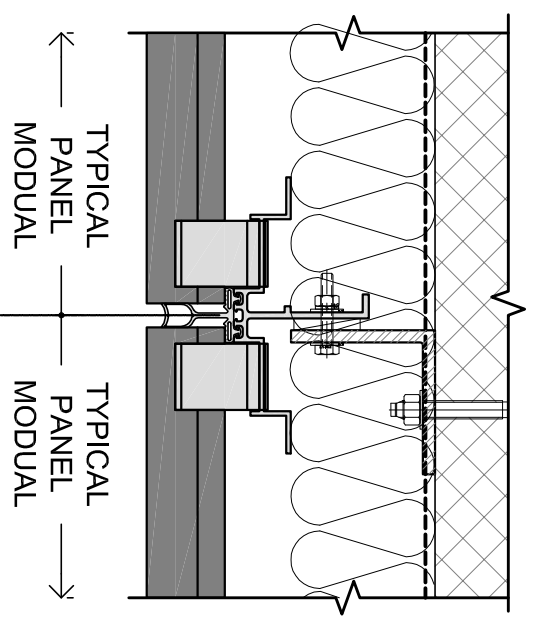


3/8" OPEN JOINT W/ STANDARD TRACK (VT)
 W/ COMPRESSION BUBBLE
 & CLIP W/ ISOLATOR

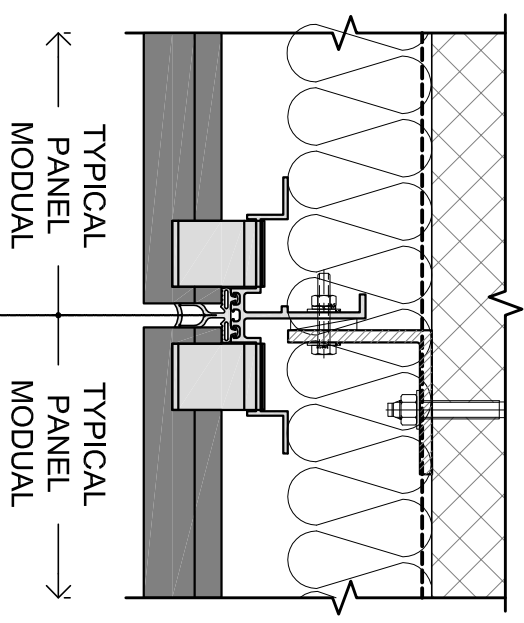
NOTE: BVTC TO SUPPLY TERRACLAD™
 PANELS, VERTICAL TRACK W/ GASKET,
 AND CLIPS W/ ISOLATORS. ALL OTHER
 COMPONENTS TO BE PROVIDED BY OTHERS.

PLAN DETAIL
CMU - W/ STANDARD TRACK

Scale: 0'-3" = 1'-0"



OPTIONAL 1/2" JOINT W/
 LONG TULIP GASKET



OPTIONAL 1/2" JOINT W/
 SHORT TULIP GASKET
 @ REVEAL PANELS

Terraclad™ Rainscreen

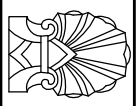
DRAWN: CEB DATE: 06/01/09 SCALE: 3" = 1'-0"

Boston Valley Terra Cotta

6860 SOUTH ABBOTT RD. ORCHARD PARK, NY 14127
 PHONE (716) 649-7490 FAX (716) 649-7688 www.terraclad.com

DETAIL
 DRAWING

CMU - 4



ALL RIGHTS RESERVED. NO PART OF THIS WORK MAY BE
 REPRODUCED OR COPIED IN ANY FORM OR BY ANY MEANS
 -GRAPHIC, ELECTRONIC, OR MECHANICAL, INCLUDING
 PHOTOCOPIING, RECORDING, TAPING OR INFORMATION
 AND RETRIEVAL SYSTEMS-WITHOUT WRITTEN PERMISSION
 OF BOSTON VALLEY TERRA COTTA.