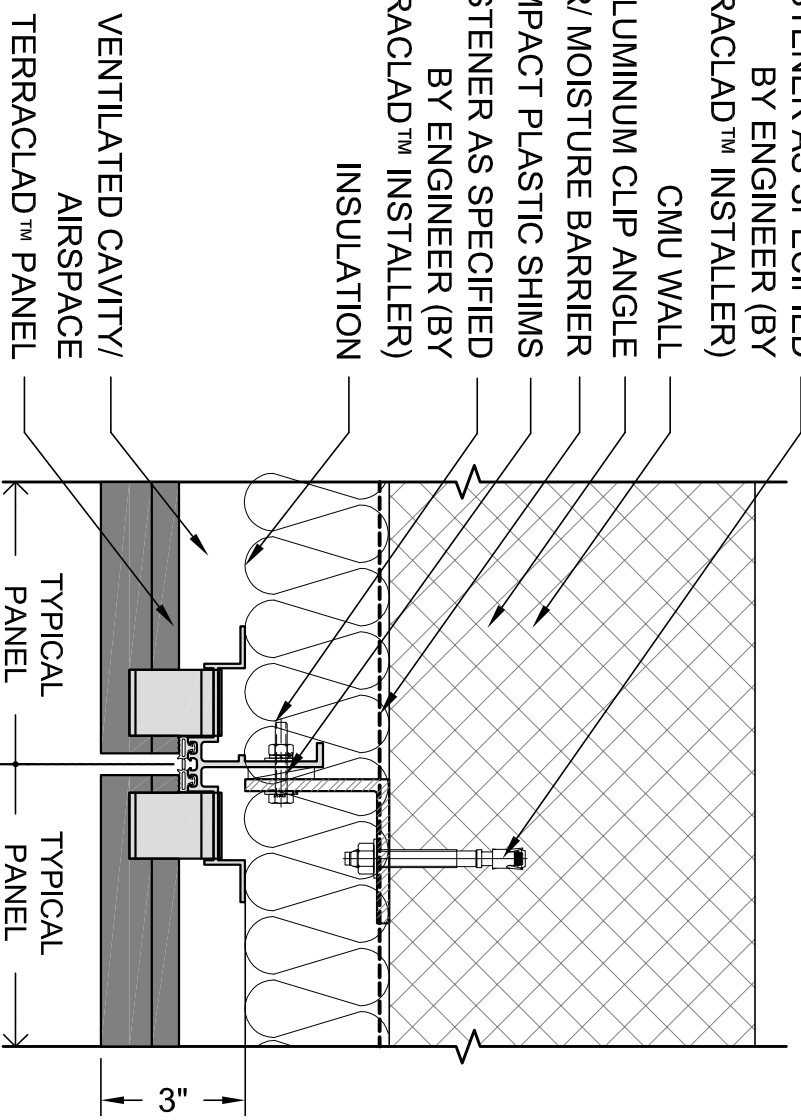
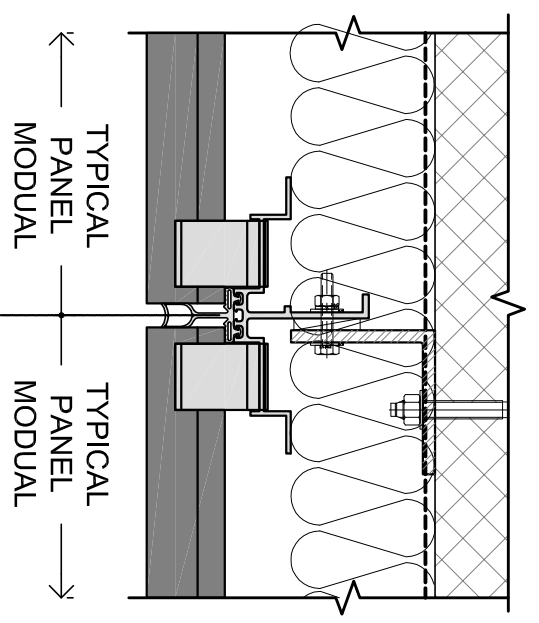


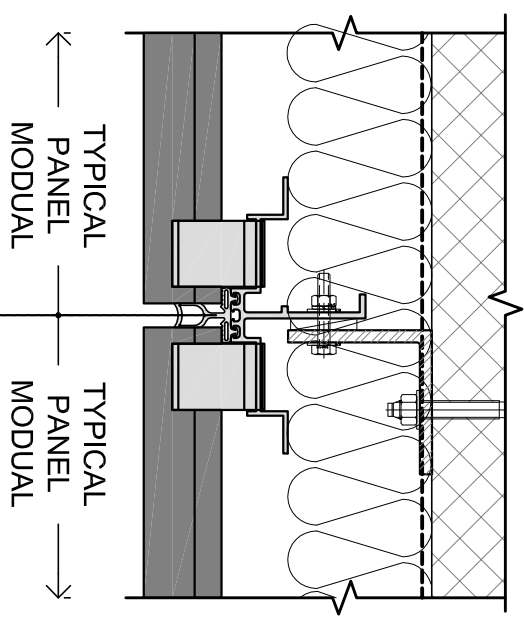
FASTENER AS SPECIFIED BY ENGINEER (BY TERRACLAD™ INSTALLER)
 CMU WALL
 ALUMINUM CLIP ANGLE
 AIR/MOISTURE BARRIER
 HIGH IMPACT PLASTIC SHIMS
 FASTENER AS SPECIFIED BY ENGINEER (BY TERRACLAD™ INSTALLER)
 INSULATION



3/8" OPEN JOINT W/ STANDARD TRACK (VT)
 W/ COMPRESSION BUBBLE
 & CLIP W/ ISOLATOR



OPTIONAL 1/2" JOINT W/
 LONG TULIP GASKET



OPTIONAL 1/2" JOINT W/
 SHORT TULIP GASKET
 @ REVEAL PANELS

NOTE: BVTC TO SUPPLY TERRACLAD™ PANELS, VERTICAL TRACK W/ GASKET, AND CLIPS W/ ISOLATORS. ALL OTHER COMPONENTS TO BE PROVIDED BY OTHERS.

PLAN DETAIL CMU - W/ STANDARD TRACK

Scale: 0'-3" = 1'-0"

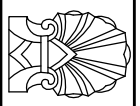
Terraclad™ Rainscreen

DRAWN: CEB DATE: 06/01/09 SCALE: 3" = 1'-0"

Boston Valley Terra Cotta

6860 SOUTH ABBOTT RD. ORCHARD PARK, NY 14127
 PHONE (716) 649-7490 FAX (716) 649-7688 www.terraclad.com

DETAIL
 DRAWING



CMU - 4

ALL RIGHTS RESERVED. NO PART OF THIS WORK MAY BE REPRODUCED OR COPIED IN ANY FORM OR BY ANY MEANS -GRAPHIC, ELECTRONIC, OR MECHANICAL, INCLUDING PHOTOCOPYING, RECORDING, TAPING OR INFORMATION AND RETRIEVAL SYSTEMS-WITHOUT WRITTEN PERMISSION OF BOSTON VALLEY TERRA COTTA.